

GOOD JOB SITE PRACTICE FOR INSTALLERS

MECHANICAL ANCHORS Used in Concrete



TORQUE-CONTROLLED EXPANSION ANCHOR

PREPARATION

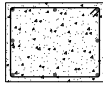
ENSURE THE RIGHT ANCHOR!



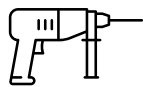
STRUCTURAL ANCHORS ARE VERY SENSITIVE TO INSTALLATION AND MUST BE INSTALLED ONLY IN CONJUNCTION WITH THE MANUFACTURER'S INSTALLATION INSTRUCTIONS AND DATA SHEET.



Check the overall conditions



DO YOU HAVE ALL THE RIGHT TOOLS?



DRILLING TOOL



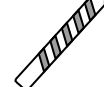
BRUSH



AIR PUMP



HAMMER



DRILL BITS



TORQUE WRENCH



INSTALLATION

1 DRILLING

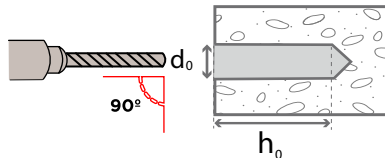


MAKE SURE YOU PUT YOUR NEW DRILL BITS



NEVER DRILL REBAR WITHOUT CHECKING WITH SITE ENGINEER

DRILL PERPENDICULAR!

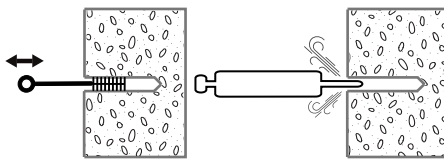


CHECK:

- DRILL DIAMETER = d_0
- HOLE DEPTH = h_0

2 HOLE CLEANING

BRUSHING + BLOWING*



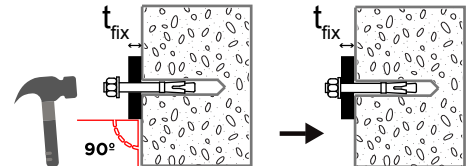
CLEAN!
POOR HOLE CLEANING IS DANGEROUS!

* CHECK MANUFACTURER'S DATA SHEET

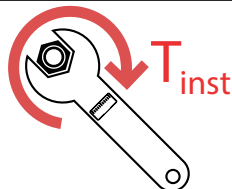
3 TAPPING



CHECK MANUFACTURER'S DATA SHEET FOR THE MAXIMUM THICKNESS t_{fix}



4 TIGHTENING



MEASURE!
TOO MUCH/LITTLE TORQUING IS DANGEROUS!